



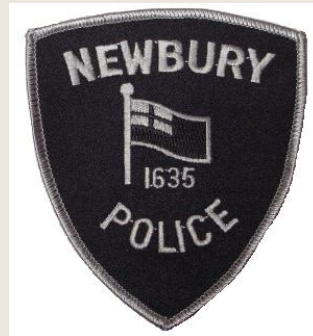
YOUR EMERGENCY RESPONSE

Sergeant Stephen Jenkins
Newbury Police Department
February 28, 2019



Your Emergency Response

- The 911 system
- Police, Fire, EMS response
- Automated External Defibrillators – Plum Island's New AEDs

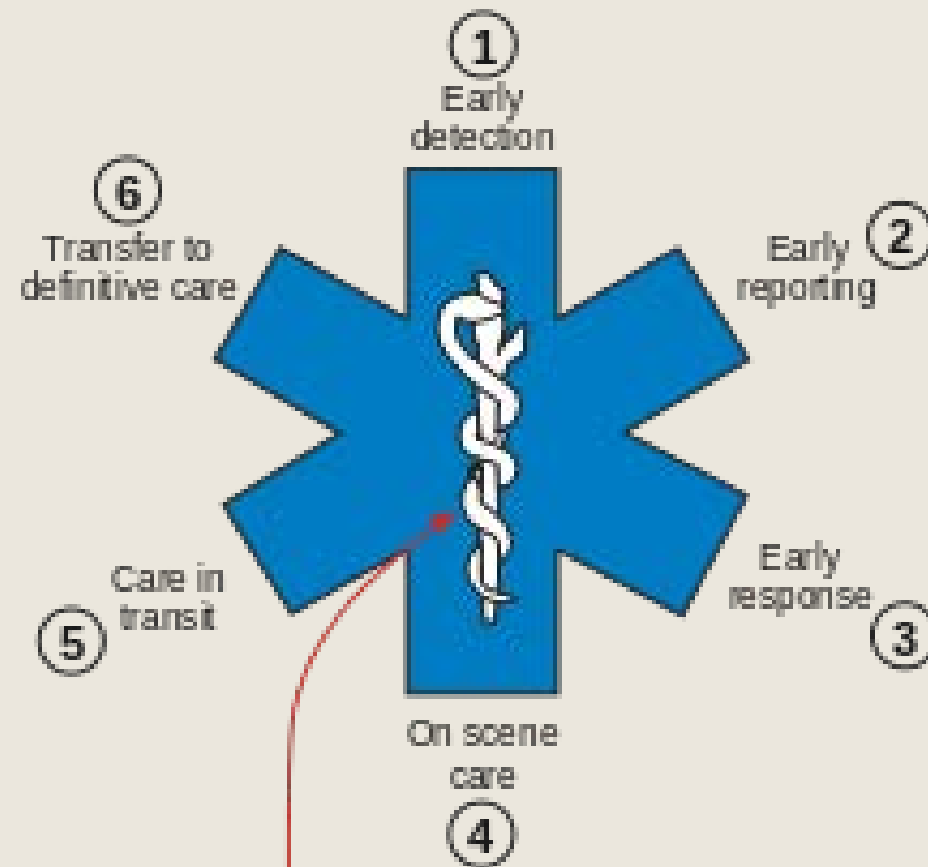


The Golden Hour



The time following a traumatic injury when prompt medical treatment has the highest likelihood to prevent death

The Golden Hour



The Rod of Asclepius - Ancient Greek symbol of healing

Emergency Occurs

- Call is received in local dispatch center
- 911 Telecommunicator (ECO)
 - *Confirms location*
 - *Ascertains nature of emergency*
 - *Obtains caller's information*
 - *Enters information into CAD program (IMC)*



911 History

- 1968 – AT&T reserved “911” as a nation-wide emergency line
 - *Basic 911 – 1960s and 1970s*
 - *Enhanced 911 – Provides the caller’s location, phone number and homeowner’s name. Incorporated TTY capability.*
- 1999 – Congress mandates 911 be utilized by communities
- 2011 – Formulation of NextGen 911

NextGen 911

- First started in 2011
- Nationwide push to modernize and embrace developing technologies
 - *Wireless/cellular calls*
 - *VoIP*
 - *Text-to-911*
- Replaces traditional copper-based lines with internet-based network
- Updated PSAP

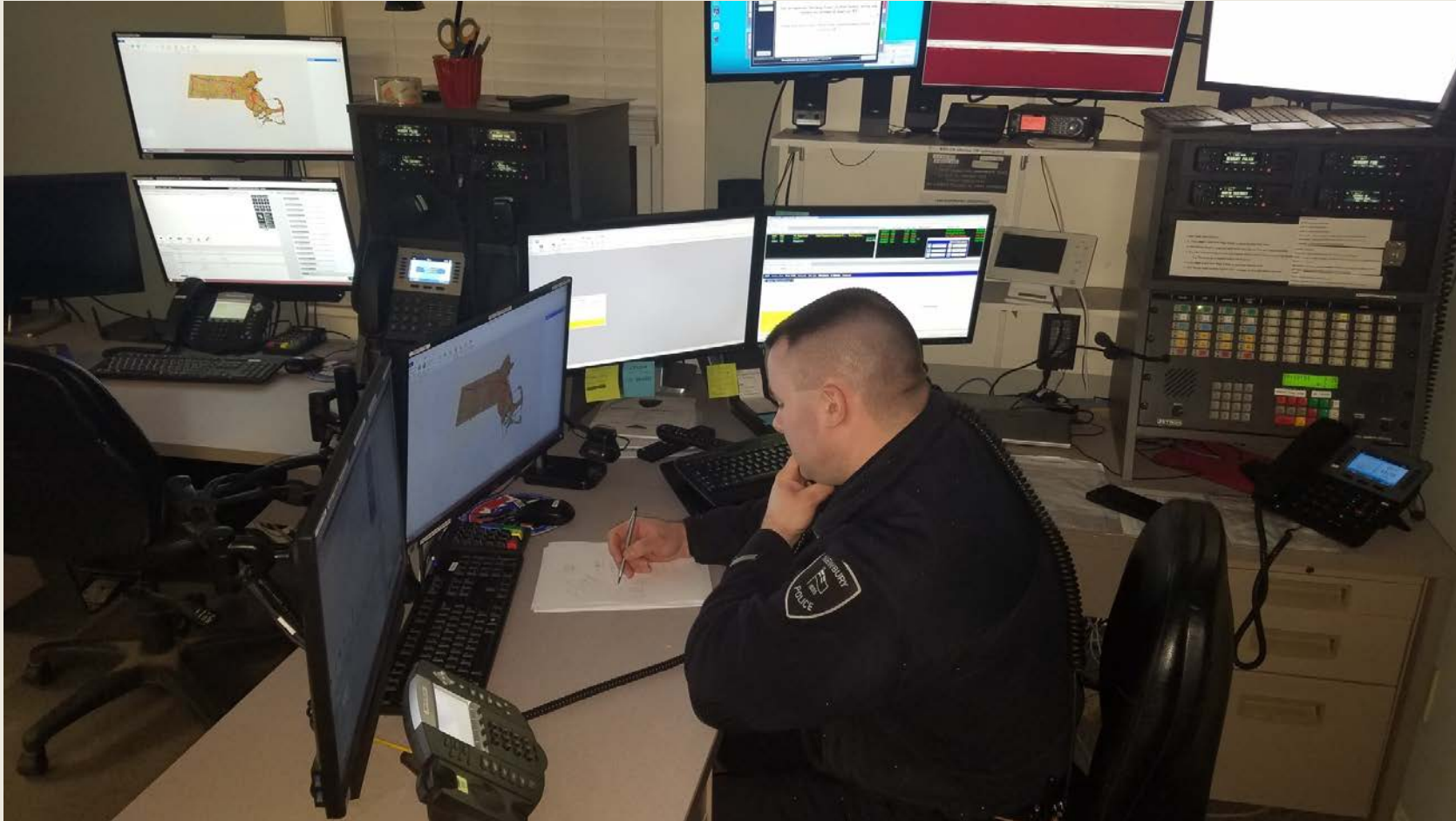
NextGen 911 PSAP

- More intuitive to use
- More reliable
- More accurate mapping
- Redundant backup systems

Public Safety Answering Point – Old



Public Safety Answering Point – New



Issues with 911



Issues with 911

- Internet-based system
- Phone line infrastructure
- Cellular coverage
 - *Caller's information and location are transmitted immediately*
 - *Location tracking through service providers*
- Human element
- Newbury PSAP emergency number:

978-463-0796

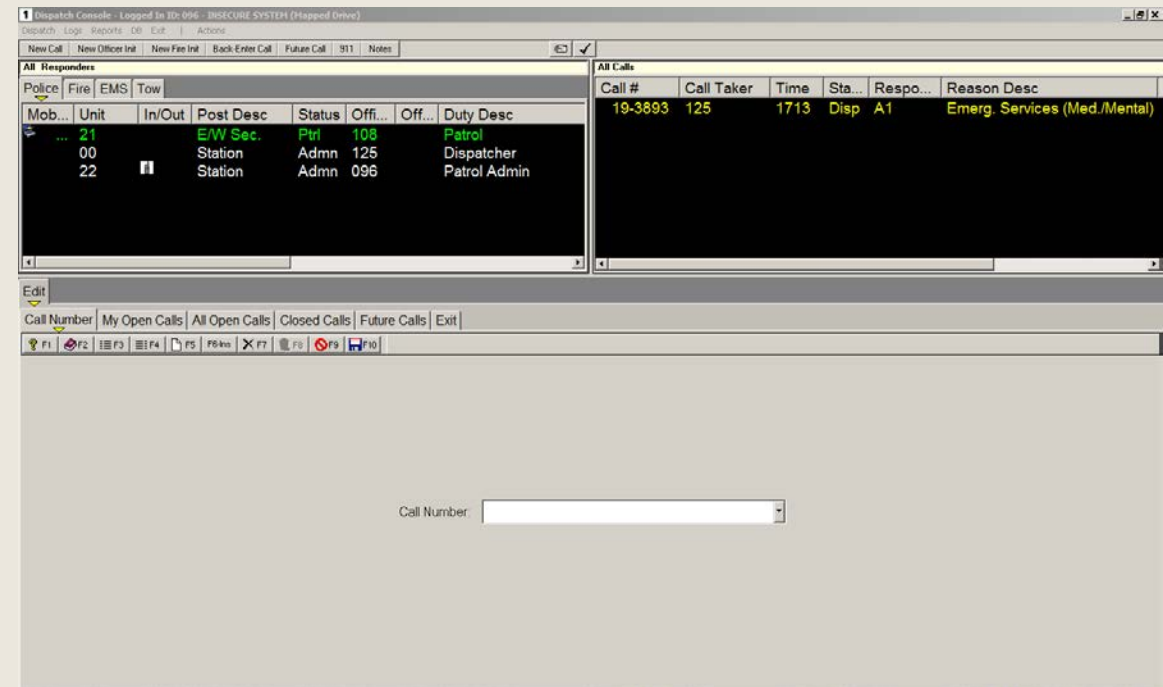
Emergency Medical Dispatch

- If the call is for a medical emergency, ECO will transfer call to Cataldo Ambulance for EMD services
- EMD is a response protocol where a specially-trained dispatcher walks the caller through initial treatment
- If necessary, Cataldo will dispatch an Advanced Life Support ambulance



Units Respond

- Call is entered into IMC
 - ECO selects police units to respond
 - Fire Department personnel are paged
- ECO simultaneously dispatches Police and Fire using radio
- Updates!
 - EMD to ECO
 - ECO to Police, Fire and EMS using radio
 - IMC call updates on Police MDTs
 - First on scene to responding units
- EMD disconnects once responders are with patient



Newbury Police Cars

- First Responder level
- All Newbury Police units, marked and unmarked, carry the following medical gear:
 - *Zoll AED+*
 - *Oxygen kit*
 - *Medical bag*
 - *Active Shooter bag*





Blizzard 2015



Blizzard 2015

PI Tpk @ Sunset Dr



Storm Grayson
1/4/2018
Plum Island, Newbury MA

Newbury Police Department Special Vehicles



Newbury Fire Apparatus

- First Responder level
- AED
- Oxygen kit
- Medical bag
- Extrication equipment
 - *Cervical spine collars*
 - *Backboards*
 - *Stairchairs*
 - *Jaws of Life – “rolling toolbox”*



Automatic Compression Machine



Ambulances

- BLS or ALS level
- Oxygen kit
 - *Airway suction*
 - *Intubation equipment*
- Advanced splinting equipment
- ALS ambulance
 - *Intravenous*
 - *Medications*
 - *EKG monitor/manual defibrillator*



What is an AED?

- Automated External Defibrillator
 - *Monophasic vs Biphasic*
- Monitors heart rhythm and determines if shock is necessary
- Information is recorded in unit for analysis at healthcare facility



Plum Island Center's New AED



Plum Island Center's New AED

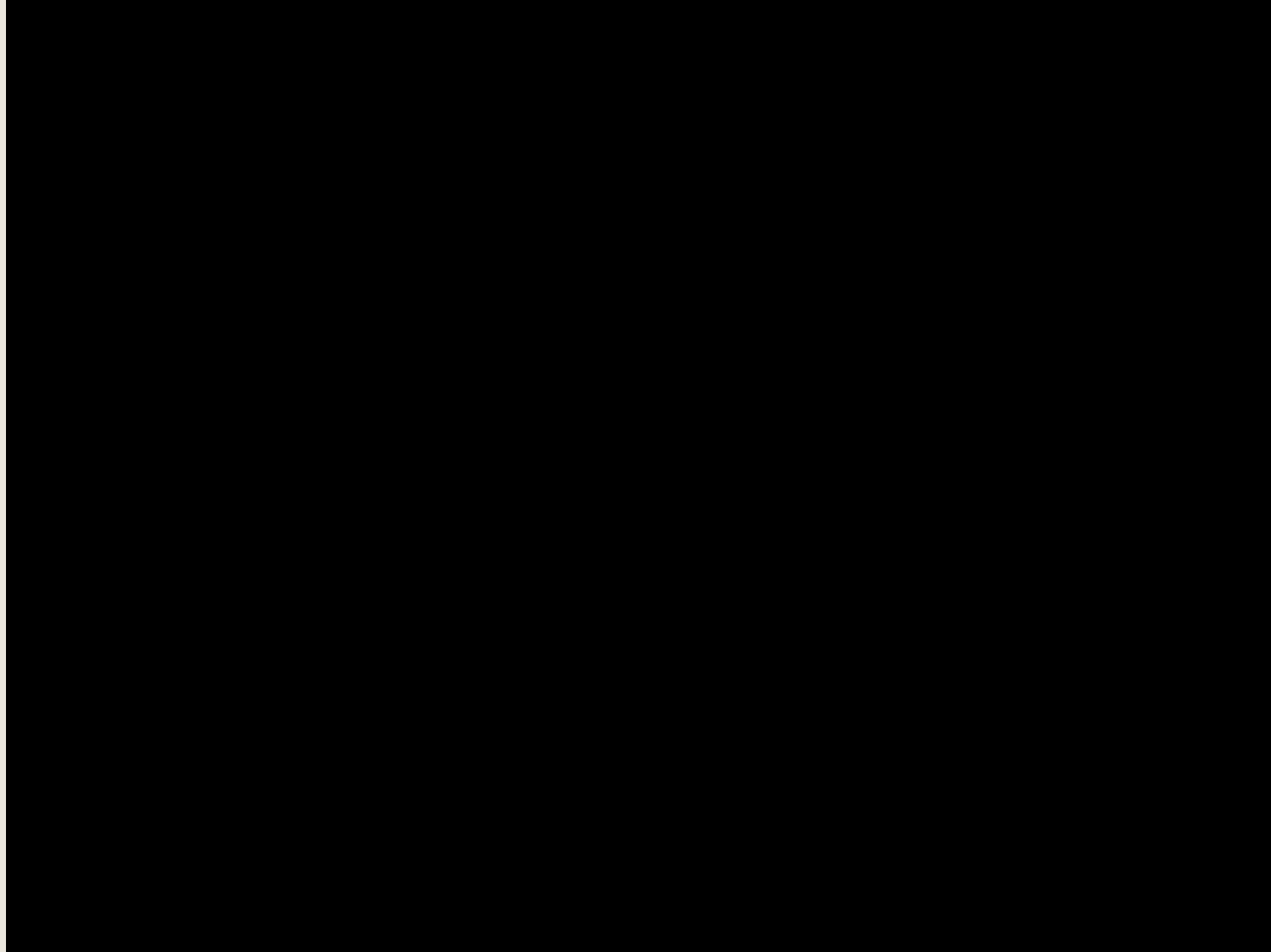


Zoll AED+

- The Zoll AED+ is the same AED used in Newbury Police Cruisers
- Semi-Automatic External Defibrillator
- Only two buttons
- Two sets of adult pads
- One set of pediatric pads
- CR123 batteries
- Real CPR Help



Zoll AED+





THANK YOU

S.JENKINS@NEWBURYPOLICE.COM

